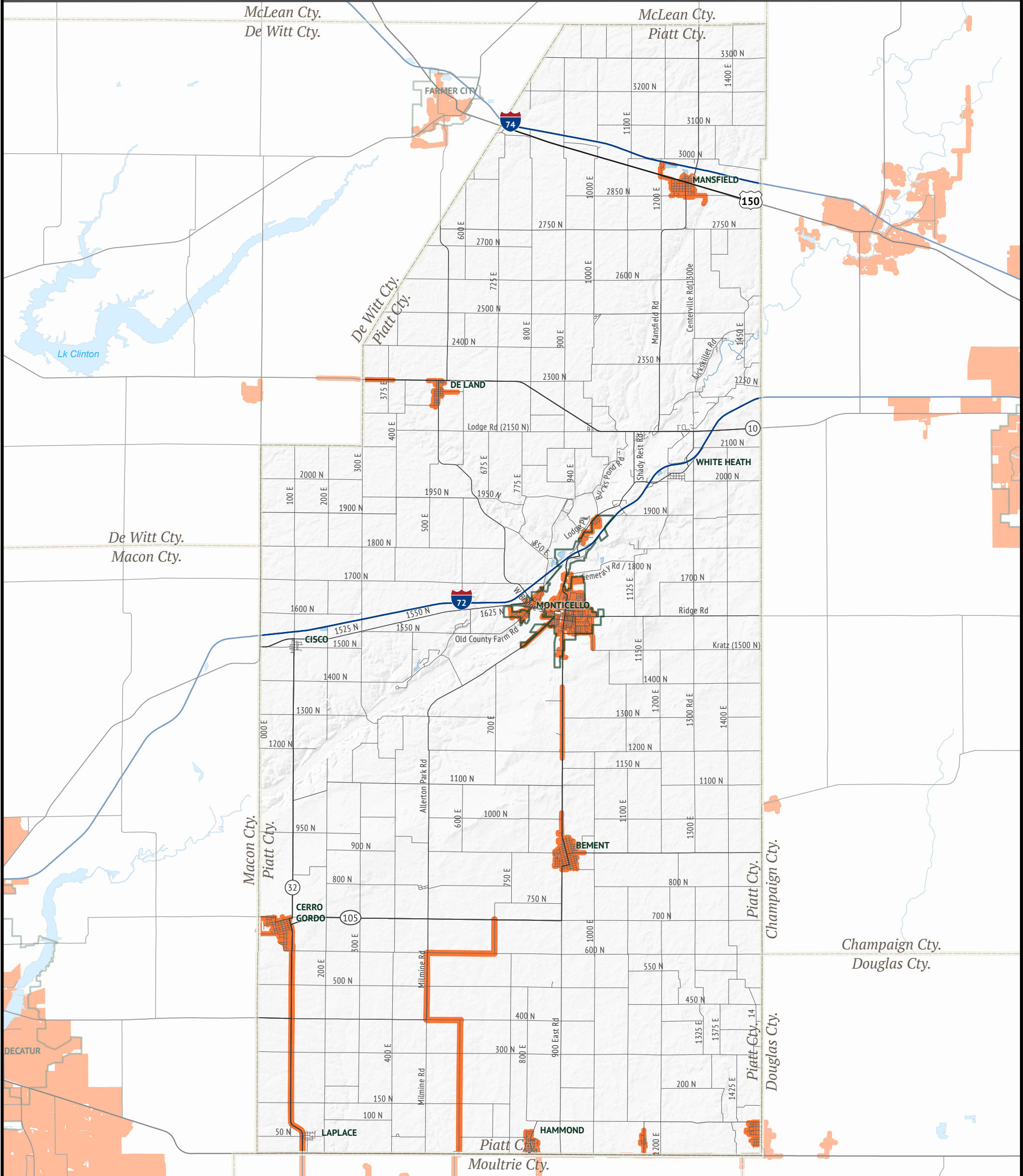




WIRELINER BROADBAND SERVICE WITH SPEEDS OF AT LEAST
 100 Mbps Download/20 Mbps Upload

Household
 Availability
67.36%
 Unserved
 Households
2,213

PIATT COUNTY
 ILLINOIS



Published June 30, 2021

Wireline Broadband Service Only

100 Mbps Download/20 Mbps Upload

- County Boundary
- Municipal Boundary
- Local Road
- Water



Broadband data are developed from a combination of direct provider outreach and data collection, FCC Form 477 broadband deployment filings, verified consumer broadband feedback, and independent research conducted by Connected Nation. If a broadband provider was unwilling or unable to supply granular data and a detailed service area could not be developed, the provider service availability is represented by FCC Form 477 data, a format which tends to be overstated.

This map is not a guarantee of internet service availability. Mobile and satellite services may also be available.

The current FCC definition of broadband is a minimum speed of 25 Mbps (Megabits per second) download and 3 Mbps upload.

Please submit feedback regarding any possible mapping inaccuracies to broadband@illinois.gov.

