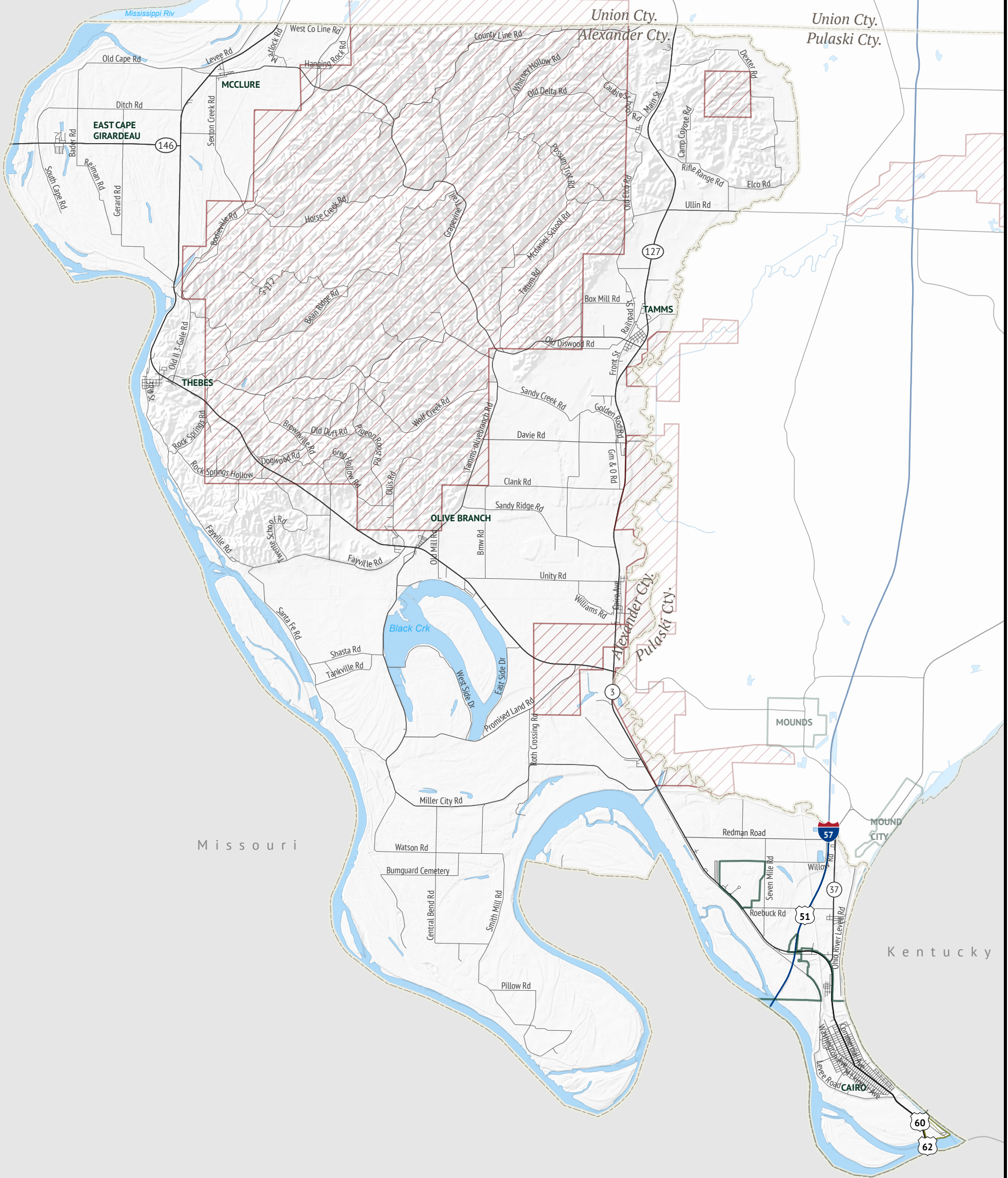




WIRELINER BROADBAND SERVICE WITH SPEEDS OF AT LEAST
 1 Gbps Download/1 Gbps Upload

ALEXANDER COUNTY
 ILLINOIS

Household
 Availability
0.00%
 Unserved
 Households
3,329



Published June 30, 2021

Wireline Broadband Service Only

 1 Gbps Download/1 Gbps Upload

-  County Boundary
-  Municipal Boundary
-  Federal Land
-  State Land/Park
-  Local Road
-  Water



Broadband data are developed from a combination of direct provider outreach and data collection, FCC Form 477 broadband deployment filings, verified consumer broadband feedback, and independent research conducted by Connected Nation. If a broadband provider was unwilling or unable to supply granular data and a detailed service area could not be developed, the provider service availability is represented by FCC Form 477 data, a format which tends to be overstated.

This map is not a guarantee of internet service availability. Mobile and satellite services may also be available.

The current FCC definition of broadband is a minimum speed of 25 Mbps (Megabits per second) download and 3 Mbps upload.

Please submit feedback regarding any possible mapping inaccuracies to broadband@illinois.gov.

